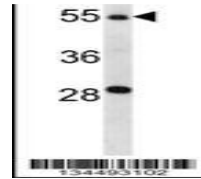
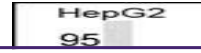
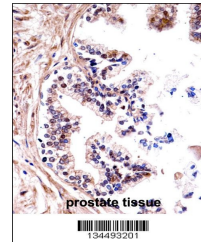

Product Datasheet

TMPRSS13 Antibody (orb1268136)

Description	TMPRSS13 Antibody
Species/Host	Rabbit
Reactivity	Human
Conjugation	Unconjugated
Tested Applications	IHC-P, WB
Immunogen	This TMPRSS13 antibody is generated from rabbits immunized with a KLH conjugated synthetic peptide between 431-460 amino acids from the C-terminal region of human TMPRSS13.
Target	TMPRSS13
Preservatives	Supplied in PBS with 0.09% (W/V) sodium azide.
Form/Appearance	Liquid
Concentration	batch dependent
Storage	Store at 4°C for three months and -20°C, stable for up to one year. As with all antibodies care should be taken to avoid repeated freeze thaw cycles. Antibodies should not be exposed to prolonged high temperatures.
Note	For research use only
Application notes	For WB starting dilution is: 1:1000 For IHC-P starting dilution is: 1:10~50
Isotype	Rabbit Ig
Clonality	Polyclonal
MW	63 kDa
Uniprot ID	Q9BYE2
NCBI	Q9BYE2
Dilution Range	For WB starting dilution is: 1:1000 For IHC-P starting dilution is: 1:10~50
Expiration Date	12 months from date of receipt.



Western blot analysis in HepG2 cell line...



TMPRSS13 Antibody immunohistochemistry a...