

---

## Product Datasheet

### UBE4A Antibody (orb1268134)

**Description**

UBE4A Antibody

**Species/Host**

Rabbit

**Reactivity**

Human

**Conjugation**

Unconjugated

**Tested Applications**

IHC-P, WB

**Immunogen**

This UBE4A antibody is generated from rabbits immunized with a KLH conjugated synthetic peptide between 451-479 amino acids from the Central region of human UBE4A.

**Target**

UBE4A

**Preservatives**

Supplied in PBS with 0.09% (W/V) sodium azide.

**Form/Appearance**

Liquid

**Concentration**

batch dependent

**Storage**

Store at 4°C for three months and -20°C, stable for up to one year. As with all antibodies care should be taken to avoid repeated freeze thaw cycles. Antibodies should not be exposed to prolonged high temperatures.

**Note**

For research use only

**Application notes**

For WB starting dilution is: 1:1000 For IHC-P starting dilution is: 1:10~50

**Isotype**

Rabbit Ig

**Clonality**

Polyclonal

**MW**

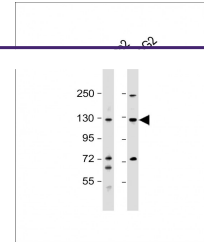
123 kDa

**Uniprot ID**
[Q14139](#)
**NCBI**
[Q14139](#)
**Dilution Range**

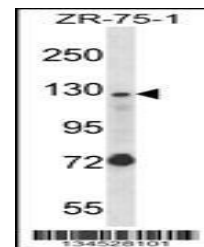
For WB starting dilution is: 1:1000 For IHC-P starting dilution is: 1:10~50

**Expiration Date**

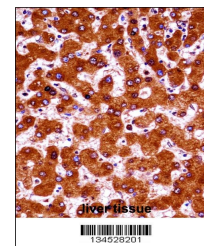
12 months from date of receipt.



Western Blot at  
1:1000 dilution Lane  
1: ...



Western blot analysis  
in ZR-75-1 cell li...



UBE4A Antibody  
immunohistochemistry  
anal...