
Product Datasheet

SPI1 Antibody (orb1268006)

Description

SPI1 Antibody

Species/Host

Rabbit

Reactivity

Human

Conjugation

Unconjugated

Tested

IF, IHC-P, WB

Applications
Immunogen

This SPI1 antibody is generated from rabbits immunized with a KLH conjugated synthetic peptide between 217-246 amino acids from the C-terminal region of human SPI1.

Target

SPI1

Preservatives

Supplied in PBS with 0.09% (W/V) sodium azide.

Form/Appearance

Liquid

Concentration

batch dependent

Storage

Store at 4°C for three months and -20°C, stable for up to one year. As with all antibodies care should be taken to avoid repeated freeze thaw cycles. Antibodies should not be exposed to prolonged high temperatures.

Note

For research use only

Application notes

For IF starting dilution is: 1:10~50
For WB starting dilution is: 1:1000
For IHC-P starting dilution is: 1:10~50

Isotype

Rabbit Ig

Clonality

Polyclonal

MW

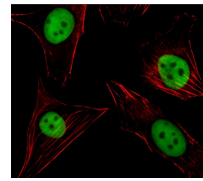
31 kDa

Uniprot ID
[P17947](#)
NCBI
[P17947](#)
Dilution Range

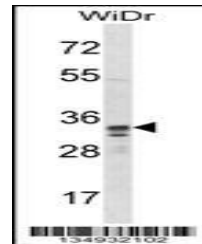
For IF starting dilution is: 1:10~50
For WB starting dilution is: 1:1000
For IHC-P starting dilution is: 1:10~50

Expiration Date

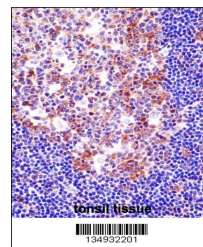
12 months from date of receipt.



Fluorescent image of NIH/3T3 cell stained...



Western blot analysis in WiDr cell line ...



SPI1 Antibody immunohistochemistry analysis...