

---

## Product Datasheet

### SMAD9 Antibody (orb1267960)

**Description**

SMAD9 Antibody

**Species/Host**

Rabbit

**Reactivity**

Human

**Conjugation**

Unconjugated

**Tested Applications**

IF, WB

**Immunogen**

This SMAD9 antibody is generated from rabbits immunized with a KLH conjugated synthetic peptide between 200-228 amino acids from the Central region of human SMAD9.

**Target**

SMAD9

**Preservatives**

Supplied in PBS with 0.09% (W/V) sodium azide.

**Form/Appearance**

Liquid

**Concentration**

batch dependent

**Storage**

Store at 4°C for three months and -20°C, stable for up to one year. As with all antibodies care should be taken to avoid repeated freeze thaw cycles. Antibodies should not be exposed to prolonged high temperatures.

**Note**

For research use only

**Application notes**

For WB starting dilution is: 1:1000 For IF starting dilution is: 1:10~50

**Isotype**

Rabbit Ig

**Clonality**

Polyclonal

**MW**

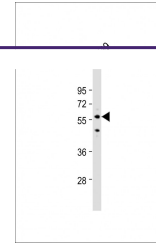
52 kDa

**Uniprot ID**
[O15198](#)
**NCBI**
[O15198](#)
**Dilution Range**

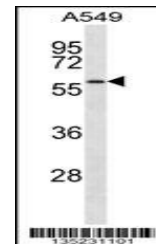
For WB starting dilution is: 1:1000 For IF starting dilution is: 1:10~50

**Expiration Date**

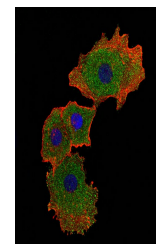
12 months from date of receipt.



Western Blot at 1:1000 dilution + A549 w...



Western blot analysis in A549 cell line ...



Fluorescent confocal image of MCF-7 cell...