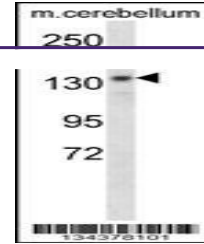
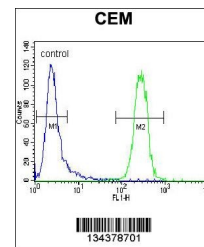

Product Datasheet

POLG Antibody (orb1267926)

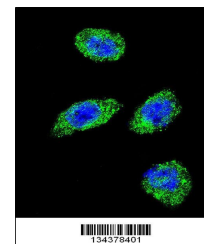
Description	POLG Antibody
Species/Host	Rabbit
Reactivity	Human, Mouse
Conjugation	Unconjugated
Tested Applications	FC, IF, IHC-P, WB
Immunogen	This POLG antibody is generated from rabbits immunized with a KLH conjugated synthetic peptide between 1120-1148 amino acids from the C-terminal region of human POLG.
Target	POLG
Preservatives	Supplied in PBS with 0.09% (W/V) sodium azide.
Form/Appearance	Liquid
Concentration	batch dependent
Storage	Store at 4°C for three months and -20°C, stable for up to one year. As with all antibodies care should be taken to avoid repeated freeze thaw cycles. Antibodies should not be exposed to prolonged high temperatures.
Note	For research use only
Application notes	For WB starting dilution is: 1:1000For FACS starting dilution is: 1:10~50For IF starting dilution is: 1:10~50For IHC-P starting dilution is: 1:10~50
Isotype	Rabbit Ig
Clonality	Polyclonal
MW	140 kDa
Uniprot ID	P54098
NCBI	P54098
Dilution Range	For WB starting dilution is: 1:1000For FACS starting dilution is: 1:10~50For IF starting dilution is: 1:10~50For IHC-P starting dilution is: 1:10~50
Expiration Date	12 months from date of receipt.



Western blot analysis in mouse cerebellu...



Flow cytometric analysis of CEM cells (r...



Confocal immunofluorescent analysis of P...