

---

## Product Datasheet

### DKK3 Antibody (orb1267876)

**Description**

DKK3 Antibody

**Species/Host**

Rabbit

**Reactivity**

Human

**Conjugation**

Unconjugated

**Tested**

IHC-P, WB

**Applications**
**Immunogen**

This DKK3 antibody is generated from rabbits immunized with a KLH conjugated synthetic peptide between 15-45 amino acids from the N-terminal region of human DKK3.

**Target**

DKK3

**Preservatives**

Supplied in PBS with 0.09% (W/V) sodium azide.

**Form/Appearance**

Liquid

**Concentration**

batch dependent

**Storage**

Store at 4°C for three months and -20°C, stable for up to one year. As with all antibodies care should be taken to avoid repeated freeze thaw cycles. Antibodies should not be exposed to prolonged high temperatures.

**Note**

For research use only

**Application notes**

For WB starting dilution is: 1:1000 For IHC-P starting dilution is: 1:50~100

**Isotype**

Rabbit Ig

**Clonality**

Polyclonal

**MW**

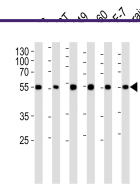
38 kDa

**Uniprot ID**
[Q9UBP4](#)
**NCBI**
[Q9UBP4](#)
**Dilution Range**

For WB starting dilution is: 1:1000 For IHC-P starting dilution is: 1:50~100

**Expiration Date**

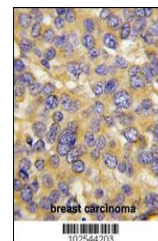
12 months from date of receipt.



Western blot analysis of lysates from 29...



Formalin-fixed and paraffin-embedded hum...



Formalin-fixed and paraffin-embedded hum...