
Product Datasheet

CTBP1 Antibody (orb1267852)

Description

CTBP1 Antibody

Species/Host

Rabbit

Reactivity

Human, Mouse, Rat

Conjugation

Unconjugated

Tested

IF, WB

Applications
Immunogen

This CTBP1 antibody is generated from rabbits immunized with a KLH conjugated synthetic peptide between 413-440 amino acids from the C-terminal region of human CTBP1.

Target

CTBP1

Preservatives

Supplied in PBS with 0.09% (W/V) sodium azide.

Form/Appearance

Liquid

Concentration

batch dependent

Storage

Store at 4°C for three months and -20°C, stable for up to one year. As with all antibodies care should be taken to avoid repeated freeze thaw cycles. Antibodies should not be exposed to prolonged high temperatures.

Note

For research use only

Application notes

For WB starting dilution is: 1:1000 For IF starting dilution is: 1:10~50

Isotype

Rabbit Ig

Clonality

Polyclonal

MW

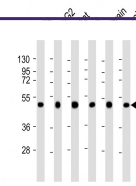
48 kDa

Uniprot ID
[Q13363](#)
NCBI
[Q13363](#)
Dilution Range

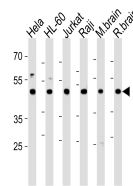
For WB starting dilution is: 1:1000 For IF starting dilution is: 1:10~50

Expiration Date

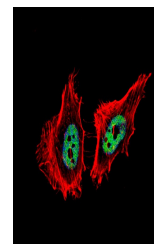
12 months from date of receipt.



Western Blot at 1:2000 dilution Lane 1: ...



Western blot analysis in HeLa, HL-60, Ju...



Fluorescent confocal image of HeLa cell ...