
Product Datasheet

SIGLEC5 Antibody (orb1267699)

Description

SIGLEC5 Antibody

Species/Host

Rabbit

Reactivity

Human, Mouse

Conjugation

Unconjugated

Tested Applications

WB

Immunogen

This SIGLEC5 antibody is generated from rabbits immunized with a KLH conjugated synthetic peptide between 482-513 amino acids from the C-terminal region of human SIGLEC5.

Target

SIGLEC5

Preservatives

Supplied in PBS with 0.09% (W/V) sodium azide.

Form/Appearance

Liquid

Concentration

batch dependent

Storage

Store at 4°C for three months and -20°C, stable for up to one year. As with all antibodies care should be taken to avoid repeated freeze thaw cycles. Antibodies should not be exposed to prolonged high temperatures.

Note

For research use only

Application notes

For WB starting dilution is: 1:1000

Isotype

Rabbit Ig

Clonality

Polyclonal

MW

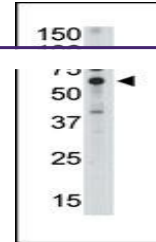
61 kDa

Uniprot ID
[O15389](#)
NCBI
[O15389](#)
Dilution Range

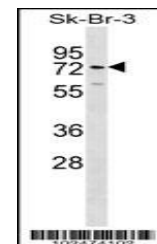
For WB starting dilution is: 1:1000

Expiration Date

12 months from date of receipt.



Antibody is used in Western blot to dete...



Western blot analysis in SK-BR-3 cell li...