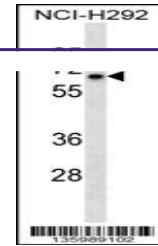

Product Datasheet

KLHL41 Antibody (orb1267555)

Description

KLHL41 Antibody


Species/Host

Rabbit

Reactivity

Human

Conjugation

Unconjugated

Tested

WB

Applications

Western blot analysis in NCI-H292 cell l...

Immunogen

This KBTBD10 antibody is generated from rabbits immunized with a KLH conjugated synthetic peptide between 547-575 amino acids from the C-terminal region of human KBTBD10.

Target

KLHL41

Preservatives

Supplied in PBS with 0.09% (W/V) sodium azide.

Form/Appearance

Liquid

Concentration

batch dependent

Storage

Store at 4°C for three months and -20°C, stable for up to one year. As with all antibodies care should be taken to avoid repeated freeze thaw cycles. Antibodies should not be exposed to prolonged high temperatures.

Note

For research use only

Application notes

For WB starting dilution is: 1:1000

Isotype

Rabbit Ig

Clonality

Polyclonal

MW

68 kDa

Uniprot ID
[O60662](#)
NCBI
[O60662](#)
Dilution Range

For WB starting dilution is: 1:1000

Expiration Date

12 months from date of receipt.