

---

## Product Datasheet

### RAB15 Antibody (orb1267338)

**Description**

RAB15 Antibody

**Species/Host**

Rabbit

**Reactivity**

Human

**Conjugation**

Unconjugated

**Tested**

WB

**Applications**
**Immunogen**

This RAB15 antibody is generated from rabbits immunized with a KLH conjugated synthetic peptide between 105-133 amino acids from the Central region of human RAB15.

**Target**

RAB15

**Preservatives**

Supplied in PBS with 0.09% (W/V) sodium azide.

**Form/Appearance**

Liquid

**Concentration**

batch dependent

**Storage**

Store at 4°C for three months and -20°C, stable for up to one year. As with all antibodies care should be taken to avoid repeated freeze thaw cycles. Antibodies should not be exposed to prolonged high temperatures.

**Note**

For research use only

**Application notes**

For WB starting dilution is: 1:1000

**Isotype**

Rabbit Ig

**Clonality**

Polyclonal

**MW**

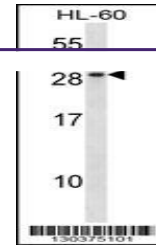
24 kDa

**Uniprot ID**
[P59190](#)
**NCBI**
[P59190](#)
**Dilution Range**

For WB starting dilution is: 1:1000

**Expiration Date**

12 months from date of receipt.



Western blot analysis in HL-60 cell line...