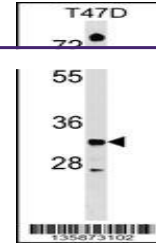


---

## Product Datasheet

### TSMF Antibody (orb1267254)

<b>Description</b>	TSFM Antibody
<b>Species/Host</b>	Rabbit
<b>Reactivity</b>	Human
<b>Conjugation</b>	Unconjugated
<b>Tested Applications</b>	WB
<b>Immunogen</b>	This TSFM antibody is generated from rabbits immunized with a KLH conjugated synthetic peptide between 253-282 amino acids from the C-terminal region of human TSFM.
<b>Target</b>	TSFM
<b>Preservatives</b>	Supplied in PBS with 0.09% (W/V) sodium azide.
<b>Form/Appearance</b>	Liquid
<b>Concentration</b>	batch dependent
<b>Storage</b>	Store at 4°C for three months and -20°C, stable for up to one year. As with all antibodies care should be taken to avoid repeated freeze thaw cycles. Antibodies should not be exposed to prolonged high temperatures.
<b>Note</b>	For research use only
<b>Application notes</b>	For WB starting dilution is: 1:1000
<b>Isotype</b>	Rabbit Ig
<b>Clonality</b>	Polyclonal
<b>MW</b>	35 kDa
<b>Uniprot ID</b>	<a href="#">P43897</a>
<b>NCBI</b>	<a href="#">P43897</a>
<b>Dilution Range</b>	For WB starting dilution is: 1:1000
<b>Expiration Date</b>	12 months from date of receipt.



Western blot analysis in T47D cell line ...