

---

## Product Datasheet

### CRTAP Antibody (orb1267138)

**Description**

CRTAP Antibody

**Species/Host**

Rabbit

**Reactivity**

Human

**Conjugation**

Unconjugated

**Tested Applications**

IF, WB

**Immunogen**

This CRTAP antibody is generated from rabbits immunized with a KLH conjugated synthetic peptide between 31-59 amino acids from the N-terminal region of human CRTAP.

**Target**

CRTAP

**Preservatives**

Supplied in PBS with 0.09% (W/V) sodium azide.

**Form/Appearance**

Liquid

**Concentration**

batch dependent

**Storage**

Store at 4°C for three months and -20°C, stable for up to one year. As with all antibodies care should be taken to avoid repeated freeze thaw cycles. Antibodies should not be exposed to prolonged high temperatures.

**Note**

For research use only

**Application notes**

For IF starting dilution is: 1:25 For WB starting dilution is: 1:1000

**Isotype**

Rabbit Ig

**Clonality**

Polyclonal

**MW**

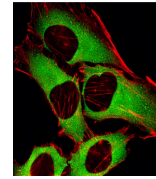
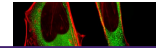
47 kDa

**Uniprot ID**
[O75718](#)
**NCBI**
[O75718](#)
**Dilution Range**

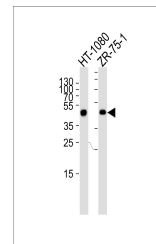
For IF starting dilution is: 1:25 For WB starting dilution is: 1:1000

**Expiration Date**

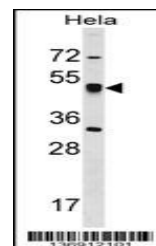
12 months from date of receipt.



Fluorescent image of HeLa cells stained ...



Western blot analysis of lysates from HT...



Western blot analysis in HeLa cell line ...