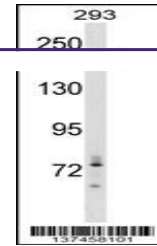

Product Datasheet

ACACA Antibody (orb1267071)

| | |
|----------------------------|--|
| Description | ACACA Antibody |
| Species/Host | Rabbit |
| Reactivity | Human |
| Conjugation | Unconjugated |
| Tested Applications | WB |
| Immunogen | This ACACA antibody is generated from rabbits immunized with a KLH conjugated synthetic peptide between 2010-2039 amino acids from the C-terminal region of human ACACA. |
| Target | ACACA |
| Preservatives | Supplied in PBS with 0.09% (W/V) sodium azide. |
| Form/Appearance | Liquid |
| Concentration | batch dependent |
| Storage | Store at 4°C for three months and -20°C, stable for up to one year. As with all antibodies care should be taken to avoid repeated freeze thaw cycles. Antibodies should not be exposed to prolonged high temperatures. |
| Note | For research use only |
| Application notes | For WB starting dilution is: 1:1000 |
| Isotype | Rabbit Ig |
| Clonality | Polyclonal |
| MW | 266 kDa |
| Uniprot ID | Q13085 |
| NCBI | Q13085 |
| Dilution Range | For WB starting dilution is: 1:1000 |
| Expiration Date | 12 months from date of receipt. |



Western blot analysis in 293 cell line l...