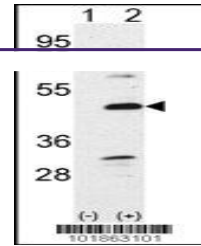
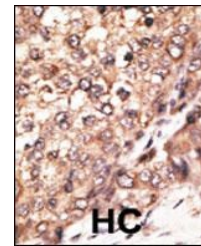

Product Datasheet

BMP7 Antibody (orb1267040)

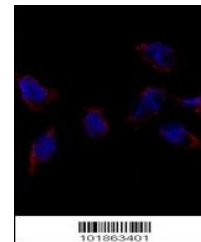
Description	BMP7 Antibody
Species/Host	Rabbit
Reactivity	Human
Conjugation	Unconjugated
Tested Applications	IF, IHC-P, WB
Immunogen	This Bmp7 antibody is generated from rabbits immunized with a KLH conjugated synthetic peptide between 15-44 amino acids from the N-terminal region of human Bmp7.
Target	BMP7
Preservatives	Supplied in PBS with 0.09% (W/V) sodium azide.
Form/Appearance	Liquid
Concentration	batch dependent
Storage	Store at 4°C for three months and -20°C, stable for up to one year. As with all antibodies care should be taken to avoid repeated freeze thaw cycles. Antibodies should not be exposed to prolonged high temperatures.
Note	For research use only
Application notes	For WB starting dilution is: 1:1000For IHC-P starting dilution is: 1:50~100For IF starting dilution is: 1:50~100
Isotype	Rabbit Ig
Clonality	Polyclonal
MW	49 kDa
Uniprot ID	P18075
NCBI	P18075
Dilution Range	For WB starting dilution is: 1:1000For IHC-P starting dilution is: 1:50~100For IF starting dilution is: 1:50~100
Expiration Date	12 months from date of receipt.



Western blot analysis of Bmp7 using rabb...



Formalin-fixed and paraffin-embedded hum...



Immunofluorescence analysis of Bmp7 Anti...