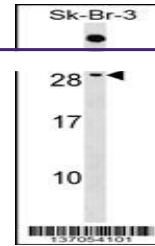
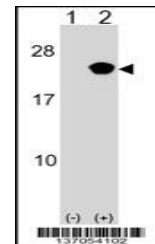

Product Datasheet

RAP2B Antibody (orb1266860)

Description	RAP2B Antibody
Species/Host	Rabbit
Reactivity	Human
Conjugation	Unconjugated
Tested Applications	WB
Immunogen	This RAP2B antibody is generated from rabbits immunized with a KLH conjugated synthetic peptide between 102-129 amino acids from the Central region of human RAP2B.
Target	RAP2B
Preservatives	Supplied in PBS with 0.09% (W/V) sodium azide.
Form/Appearance	Liquid
Concentration	batch dependent
Storage	Store at 4°C for three months and -20°C, stable for up to one year. As with all antibodies care should be taken to avoid repeated freeze thaw cycles. Antibodies should not be exposed to prolonged high temperatures.
Note	For research use only
Application notes	For WB starting dilution is: 1:1000
Isotype	Rabbit Ig
Clonality	Polyclonal
MW	21 kDa
Uniprot ID	P61225
NCBI	P61225
Dilution Range	For WB starting dilution is: 1:1000
Expiration Date	12 months from date of receipt.



Western blot analysis in SK-BR-3 cell li...



Western blot analysis of RAP2B using rab...