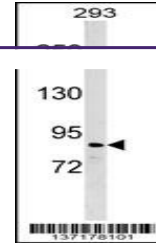

Product Datasheet

ZNF7 Antibody (orb1266845)

Description	ZNF7 Antibody
Species/Host	Rabbit
Reactivity	Human
Conjugation	Unconjugated
Tested Applications	WB
Immunogen	This ZNF7 antibody is generated from rabbits immunized with a KLH conjugated synthetic peptide between 595-625 amino acids from the C-terminal region of human ZNF7.
Target	ZNF7
Preservatives	Supplied in PBS with 0.09% (W/V) sodium azide.
Form/Appearance	Liquid
Concentration	batch dependent
Storage	Store at 4°C for three months and -20°C, stable for up to one year. As with all antibodies care should be taken to avoid repeated freeze thaw cycles. Antibodies should not be exposed to prolonged high temperatures.
Note	For research use only
Application notes	For WB starting dilution is: 1:1000
Isotype	Rabbit Ig
Clonality	Polyclonal
MW	78 kDa
Uniprot ID	P17097
NCBI	P17097
Dilution Range	For WB starting dilution is: 1:1000
Expiration Date	12 months from date of receipt.



Western blot analysis in 293 cell line
I...