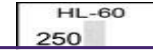

Product Datasheet

PCDHA10 Antibody (orb1266823)

Description

PCDHA10 Antibody


Species/Host

Rabbit

Reactivity

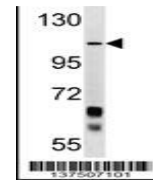
Human

Conjugation

Unconjugated

Tested

WB

Applications


Western blot analysis in HL-60 cell line...

Immunogen

This PCDHA10 antibody is generated from rabbits immunized with a KLH conjugated synthetic peptide between 771-798 amino acids from the C-terminal region of human PCDHA10.

Target

PCDHA10

Preservatives

Supplied in PBS with 0.09% (W/V) sodium azide.

Form/Appearance

Liquid

Concentration

batch dependent

Storage

Store at 4°C for three months and -20°C, stable for up to one year. As with all antibodies care should be taken to avoid repeated freeze thaw cycles. Antibodies should not be exposed to prolonged high temperatures.

Note

For research use only

Application notes

For WB starting dilution is: 1:1000

Isotype

Rabbit Ig

Clonality

Polyclonal

MW

103 kDa

Uniprot ID
[Q9Y5I2](#)
NCBI
[Q9Y5I2](#)
Dilution Range

For WB starting dilution is: 1:1000

Expiration Date

12 months from date of receipt.