
Product Datasheet

ITGB2 Antibody (orb1266400)

Description

ITGB2 Antibody

Species/Host

Rabbit

Reactivity

Human

Conjugation

Unconjugated

Tested

WB

Applications
Immunogen

This ITGB2 antibody is generated from rabbits immunized with a KLH conjugated synthetic peptide between 272-300 amino acids from the N-terminal region of human ITGB2.

Target

ITGB2

Preservatives

Supplied in PBS with 0.09% (W/V) sodium azide.

Form/Appearance

Liquid

Concentration

batch dependent

Storage

Store at 4°C for three months and -20°C, stable for up to one year. As with all antibodies care should be taken to avoid repeated freeze thaw cycles. Antibodies should not be exposed to prolonged high temperatures.

Note

For research use only

Application notes

For WB starting dilution is: 1:1000

Isotype

Rabbit Ig

Clonality

Polyclonal

MW

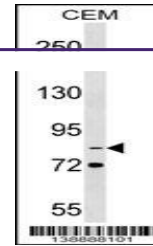
85 kDa

Uniprot ID
[P05107](#)
NCBI
[P05107](#)
Dilution Range

For WB starting dilution is: 1:1000

Expiration Date

12 months from date of receipt.



Western blot analysis in CEM cell line
I...