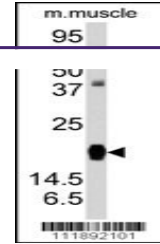


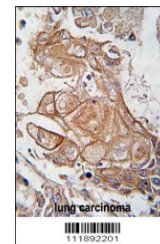
Product Datasheet

RGS19 Antibody (orb1266342)

Description	RGS19 Antibody
Species/Host	Rabbit
Reactivity	Human, Mouse
Conjugation	Unconjugated
Tested Applications	IHC-P, WB
Immunogen	This RGS19 antibody is generated from rabbits immunized with a KLH conjugated synthetic peptide between 131-156 amino acids from human RGS19.
Target	RGS19
Preservatives	Supplied in PBS with 0.09% (W/V) sodium azide.
Form/Appearance	Liquid
Concentration	batch dependent
Storage	Store at 4°C for three months and -20°C, stable for up to one year. As with all antibodies care should be taken to avoid repeated freeze thaw cycles. Antibodies should not be exposed to prolonged high temperatures.
Note	For research use only
Application notes	For WB starting dilution is: 1:1000For IHC-P starting dilution is: 1:10~50
Isotype	Rabbit Ig
Clonality	Polyclonal
MW	25 kDa
Uniprot ID	P49795
NCBI	P49795
Dilution Range	For WB starting dilution is: 1:1000For IHC-P starting dilution is: 1:10~50
Expiration Date	12 months from date of receipt.



Western blot analysis of anti-RGS19 Anti...



Formalin-fixed and paraffin-embedded hum...