
Product Datasheet

PAFAH1B2 Antibody (orb1266236)

Description

PAFAH1B2 Antibody

Species/Host

Rabbit

Reactivity

Human

Conjugation

Unconjugated

Tested

WB

Applications
Immunogen

This PAFAH1B2 antibody is generated from rabbits immunized with a KLH conjugated synthetic peptide between 61-89 amino acids from the Central region of human PAFAH1B2.

Target

PAFAH1B2

Preservatives

Supplied in PBS with 0.09% (W/V) sodium azide.

Form/Appearance

Liquid

Concentration

batch dependent

Storage

Store at 4°C for three months and -20°C, stable for up to one year. As with all antibodies care should be taken to avoid repeated freeze thaw cycles. Antibodies should not be exposed to prolonged high temperatures.

Note

For research use only

Application notes

For WB starting dilution is: 1:1000

Isotype

Rabbit Ig

Clonality

Polyclonal

MW

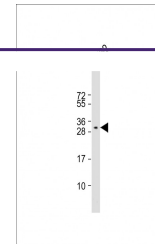
26 kDa

Uniprot ID
[P68402](#)
NCBI
[P68402](#)
Dilution Range

For WB starting dilution is: 1:1000

Expiration Date

12 months from date of receipt.



Western Blot
at 1:1000
dilution +
K562 w...