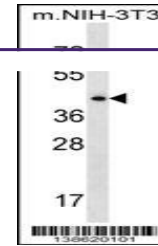
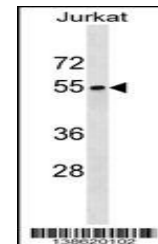

Product Datasheet

SEPT6 Antibody (orb1266004)

Description	SEPT6 Antibody
Species/Host	Rabbit
Reactivity	Human, Mouse
Conjugation	Unconjugated
Tested Applications	WB
Immunogen	This SEPT6 antibody is generated from rabbits immunized with a KLH conjugated synthetic peptide between 400-426 amino acids from the C-terminal region of human SEPT6.
Target	SEPT6
Preservatives	Supplied in PBS with 0.09% (W/V) sodium azide.
Form/Appearance	Liquid
Concentration	batch dependent
Storage	Store at 4°C for three months and -20°C, stable for up to one year. As with all antibodies care should be taken to avoid repeated freeze thaw cycles. Antibodies should not be exposed to prolonged high temperatures.
Note	For research use only
Application notes	For WB starting dilution is: 1:1000
Isotype	Rabbit Ig
Clonality	Polyclonal
MW	50 kDa
Uniprot ID	Q14141
NCBI	Q14141
Dilution Range	For WB starting dilution is: 1:1000
Expiration Date	12 months from date of receipt.



Western blot analysis in mouse NIH-3T3 c...



Western blot analysis in Jurkat cell lin...