
Product Datasheet

PPIAL4A Antibody (orb1265885)

Description

PPIAL4A Antibody

Species/Host

Rabbit

Reactivity

Human

Conjugation

Unconjugated

Tested

WB

Applications
Immunogen

This PPIAL4A antibody is generated from rabbits immunized with a KLH conjugated synthetic peptide between 66-92 amino acids from the Central region of human PPIAL4A.

Target

PPIAL4A

Preservatives

Supplied in PBS with 0.09% (W/V) sodium azide.

Form/Appearance

Liquid

Concentration

batch dependent

Storage

Store at 4°C for three months and -20°C, stable for up to one year. As with all antibodies care should be taken to avoid repeated freeze thaw cycles. Antibodies should not be exposed to prolonged high temperatures.

Note

For research use only

Application notes

For WB starting dilution is: 1:1000

Isotype

Rabbit Ig

Clonality

Polyclonal

MW

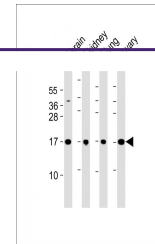
18 kDa

Uniprot ID
[Q9Y536](#)
NCBI
[Q9Y536](#)
Dilution Range

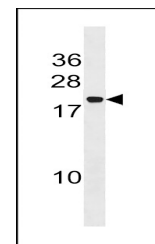
For WB starting dilution is: 1:1000

Expiration Date

12 months from date of receipt.



Western Blot at 1:2000 dilution Lane 1: ...



Western blot analysis in NCI-H460 cell l...