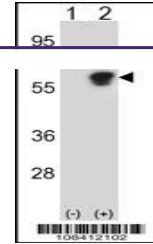
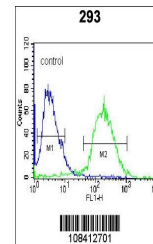

Product Datasheet

NAP1L1 Antibody (orb1265673)

Description	NAP1L1 Antibody
Species/Host	Rabbit
Reactivity	Human
Conjugation	Unconjugated
Tested Applications	FC, WB
Immunogen	This NAP1L1 antibody is generated from rabbits immunized with a KLH conjugated synthetic peptide between 352-381 amino acids from the C-terminal region of human NAP1L1.
Target	NAP1L1
Preservatives	Supplied in PBS with 0.09% (W/V) sodium azide.
Form/Appearance	Liquid
Concentration	batch dependent
Storage	Store at 4°C for three months and -20°C, stable for up to one year. As with all antibodies care should be taken to avoid repeated freeze thaw cycles. Antibodies should not be exposed to prolonged high temperatures.
Note	For research use only
Application notes	For WB starting dilution is: 1:1000For FACS starting dilution is: 1:10~50
Isotype	Rabbit Ig
Clonality	Polyclonal
MW	45 kDa
Uniprot ID	P55209
NCBI	P55209
Dilution Range	For WB starting dilution is: 1:1000For FACS starting dilution is: 1:10~50
Expiration Date	12 months from date of receipt.



Western blot analysis of NAP1L1 using ra...



Flow cytometric analysis of 293 cells (r...