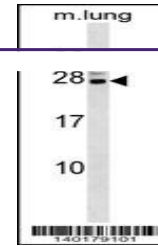

Product Datasheet

Cbx5 Antibody (orb1265659)

Description	Cbx5 Antibody
Species/Host	Rabbit
Reactivity	Mouse
Conjugation	Unconjugated
Tested Applications	WB
Immunogen	This Mouse Cbx5 antibody is generated from rabbits immunized with a KLH conjugated synthetic peptide between 160-186 amino acids from the C-terminal region of mouse Cbx5.
Target	Cbx5
Preservatives	Supplied in PBS with 0.09% (W/V) sodium azide.
Form/Appearance	Liquid
Concentration	batch dependent
Storage	Store at 4°C for three months and -20°C, stable for up to one year. As with all antibodies care should be taken to avoid repeated freeze thaw cycles. Antibodies should not be exposed to prolonged high temperatures.
Note	For research use only
Application notes	For WB starting dilution is: 1:1000
Isotype	Rabbit Ig
Clonality	Polyclonal
MW	22 kDa
Uniprot ID	Q61686
NCBI	Q61686
Dilution Range	For WB starting dilution is: 1:1000
Expiration Date	12 months from date of receipt.



Western blot analysis in mouse lung tiss...