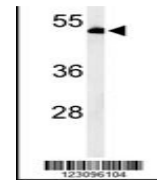
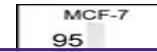
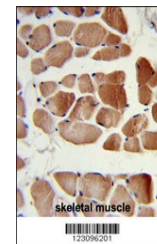

Product Datasheet

RUVBL1 Antibody (orb1265656)

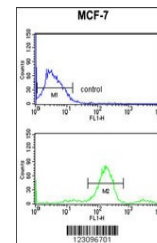
Description	RUVBL1 Antibody
Species/Host	Rabbit
Reactivity	Human
Conjugation	Unconjugated
Tested Applications	FC, IHC-P, WB
Immunogen	This RUVBL1 antibody is generated from rabbits immunized with human RUVBL1 recombinant protein.
Target	RUVBL1
Preservatives	Supplied in PBS with 0.09% (W/V) sodium azide.
Form/Appearance	Liquid
Concentration	batch dependent
Storage	Store at 4°C for three months and -20°C, stable for up to one year. As with all antibodies care should be taken to avoid repeated freeze thaw cycles. Antibodies should not be exposed to prolonged high temperatures.
Note	For research use only
Application notes	For WB starting dilution is: 1:1000For IHC-P starting dilution is: 1:50~100For FACS starting dilution is: 1:10~50
Isotype	Rabbit Ig
Clonality	Polyclonal
MW	50 kDa
Uniprot ID	Q9Y265
NCBI	Q9Y265
Dilution Range	For WB starting dilution is: 1:1000For IHC-P starting dilution is: 1:50~100For FACS starting dilution is: 1:10~50
Expiration Date	12 months from date of receipt.



Western blot analysis of RUVBL1 Antibody...



Formalin-fixed and paraffin-embedded hum...



Flow cytometry analysis of MCF-7 cells (...)