
Product Datasheet

MSX1 Antibody (orb1265639)

Description

MSX1 Antibody

Species/Host

Rabbit

Reactivity

Human, Mouse

Conjugation

Unconjugated

Tested Applications

IF, WB

Immunogen

This MSX1 antibody is generated from rabbits immunized with a KLH conjugated synthetic peptide between 111-138 amino acids from the Central region of human MSX1.

Target

MSX1

Preservatives

Supplied in PBS with 0.09% (W/V) sodium azide.

Form/Appearance

Liquid

Concentration

batch dependent

Storage

Store at 4°C for three months and -20°C, stable for up to one year. As with all antibodies care should be taken to avoid repeated freeze thaw cycles. Antibodies should not be exposed to prolonged high temperatures.

Note

For research use only

Application notes

For WB starting dilution is: 1:2000 For IF starting dilution is: 1:10~50

Isotype

Rabbit Ig

Clonality

Polyclonal

MW

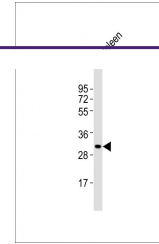
31 kDa

Uniprot ID
[P28360](#)
NCBI
[P28360](#)
Dilution Range

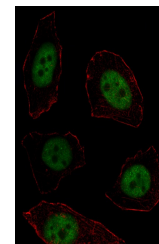
For WB starting dilution is: 1:2000 For IF starting dilution is: 1:10~50

Expiration Date

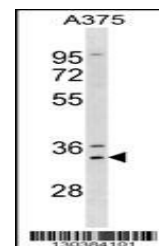
12 months from date of receipt.



Western Blot at 1:2000 dilution + mouse ...



Fluorescent image of U251 cell stained w...



Western blot analysis in A375 cell line ...