

---

## Product Datasheet

### EIF4B Antibody (orb1265476)

**Description**

EIF4B Antibody

**Species/Host**

Rabbit

**Reactivity**

Human

**Conjugation**

Unconjugated

**Tested Applications**

IHC-P, WB

**Immunogen**

This EIF4B antibody is generated from rabbits immunized with a KLH conjugated synthetic peptide between 546-575 amino acids from the C-terminal region of human EIF4B.

**Target**

EIF4B

**Preservatives**

Supplied in PBS with 0.09% (W/V) sodium azide.

**Form/Appearance**

Liquid

**Concentration**

batch dependent

**Storage**

Store at 4°C for three months and -20°C, stable for up to one year. As with all antibodies care should be taken to avoid repeated freeze thaw cycles. Antibodies should not be exposed to prolonged high temperatures.

**Note**

For research use only

**Application notes**

For WB starting dilution is: 1:1000 For IHC-P starting dilution is: 1:50~100

**Isotype**

Rabbit Ig

**Clonality**

Polyclonal

**MW**

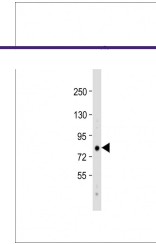
69 kDa

**Uniprot ID**
[P23588](#)
**NCBI**
[P23588](#)
**Dilution Range**

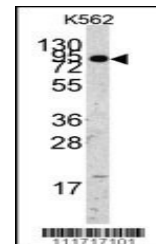
For WB starting dilution is: 1:1000 For IHC-P starting dilution is: 1:50~100

**Expiration Date**

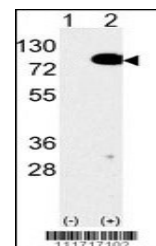
12 months from date of receipt.



Western Blot at 1:1000 dilution + Hela w...



Western blot analysis of anti-EIF4B Anti...



Western blot analysis of anti-EIF4B Anti...