
Product Datasheet

EIF4B Antibody (orb1265475)

Description

EIF4B Antibody

Species/Host

Rabbit

Reactivity

Human

Conjugation

Unconjugated

Tested

IHC-P, WB

Applications
Immunogen

This EIF4B antibody is generated from rabbits immunized with a KLH conjugated synthetic peptide between 353-382 amino acids from the Central region of human EIF4B.

Target

EIF4B

Preservatives

Supplied in PBS with 0.09% (W/V) sodium azide.

Form/Appearance

Liquid

Concentration

batch dependent

Storage

Store at 4°C for three months and -20°C, stable for up to one year. As with all antibodies care should be taken to avoid repeated freeze thaw cycles. Antibodies should not be exposed to prolonged high temperatures.

Note

For research use only

Application notes

For WB starting dilution is: 1:1000 For IHC-P starting dilution is: 1:50~100

Isotype

Rabbit Ig

Clonality

Polyclonal

MW

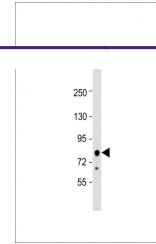
69 kDa

Uniprot ID
[P23588](#)
NCBI
[P23588](#)
Dilution Range

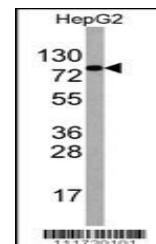
For WB starting dilution is: 1:1000 For IHC-P starting dilution is: 1:50~100

Expiration Date

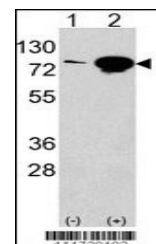
12 months from date of receipt.



Western Blot at 1:1000 dilution + Hela w...



Western blot analysis of anti-EIF4B Anti...



Western blot analysis of anti-EIF4B Anti...