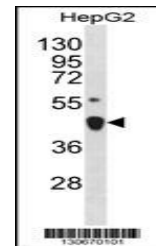


Product Datasheet

LHX4 Antibody (orb1265469)

Description	LHX4 Antibody
Species/Host	Rabbit
Reactivity	Human
Conjugation	Unconjugated
Tested Applications	WB
Immunogen	This LHX4 antibody is generated from rabbits immunized with a KLH conjugated synthetic peptide between 133-161 amino acids from the Central region of human LHX4.
Target	LHX4
Preservatives	Supplied in PBS with 0.09% (W/V) sodium azide.
Form/Appearance	Liquid
Concentration	batch dependent
Storage	Store at 4°C for three months and -20°C, stable for up to one year. As with all antibodies care should be taken to avoid repeated freeze thaw cycles. Antibodies should not be exposed to prolonged high temperatures.
Note	For research use only
Application notes	For WB starting dilution is: 1:1000
Isotype	Rabbit Ig
Clonality	Polyclonal
MW	43 kDa
Uniprot ID	Q969G2
NCBI	Q969G2
Dilution Range	For WB starting dilution is: 1:1000
Expiration Date	12 months from date of receipt.



Western blot analysis in HepG2 cell line...