

---

## Product Datasheet

### HIST1H2BJ Antibody (orb1265343)

**Description**

HIST1H2BJ Antibody

**Species/Host**

Rabbit

**Reactivity**

Human

**Conjugation**

Unconjugated

**Tested**

WB

**Applications**
**Immunogen**

This HIST1H2BJ/HIST1H2BK/HIST3H2BB antibody is generated from rabbits immunized with a KLH conjugated synthetic peptide between 98-126 amino acids from the C-terminal region of human HIST1H2BJ/HIST1H2BK/HIST3H2BB.

**Target**

HIST1H2BJ

**Preservatives**

Supplied in PBS with 0.09% (W/V) sodium azide.

**Form/Appearance**

Liquid

**Concentration**

batch dependent

**Storage**

Store at 4°C for three months and -20°C, stable for up to one year. As with all antibodies care should be taken to avoid repeated freeze thaw cycles. Antibodies should not be exposed to prolonged high temperatures.

**Note**

For research use only

**Application notes**

For WB starting dilution is: 1:1000

**Isotype**

Rabbit Ig

**Clonality**

Polyclonal

**MW**

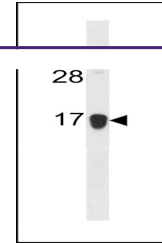
14 kDa

**Uniprot ID**
[P06899](#)
**NCBI**
[P06899](#)
**Dilution Range**

For WB starting dilution is: 1:1000

**Expiration Date**

12 months from date of receipt.



Western blot analysis in NCI-H292 cell l...