

---

## Product Datasheet

### FCER1G Antibody (orb1265287)

**Description**

FCER1G Antibody

**Species/Host**

Rabbit

**Reactivity**

Human

**Conjugation**

Unconjugated

**Tested**

IHC-P, WB

**Applications**
**Immunogen**

This FCER1G antibody is generated from rabbits immunized with a KLH conjugated synthetic peptide between 60-86 amino acids from the C-terminal region of human FCER1G.

**Target**

FCER1G

**Preservatives**

Supplied in PBS with 0.09% (W/V) sodium azide.

**Form/Appearance**

Liquid

**Concentration**

batch dependent

**Storage**

Store at 4°C for three months and -20°C, stable for up to one year. As with all antibodies care should be taken to avoid repeated freeze thaw cycles. Antibodies should not be exposed to prolonged high temperatures.

**Note**

For research use only

**Application notes**

For IHC-P starting dilution is: 1:25 For WB starting dilution is: 1:1000

**Isotype**

Rabbit IgG

**Clonality**

Polyclonal

**MW**

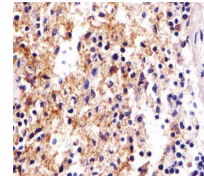
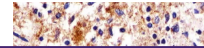
10 kDa

**Uniprot ID**
[P30273](#)
**NCBI**
[P30273](#)
**Dilution Range**

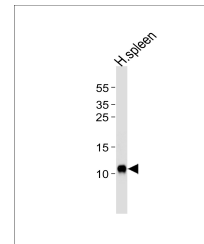
For IHC-P starting dilution is: 1:25 For WB starting dilution is: 1:1000

**Expiration Date**

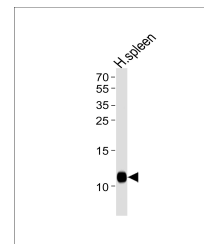
12 months from date of receipt.



Immunohistochemical analysis of paraffin...



Western blot analysis of lysate from hum...



Western blot analysis of lysate from hum...