

---

## Product Datasheet

### POLDIP3 Antibody (orb1265183)

**Description**

POLDIP3 Antibody

**Species/Host**

Rabbit

**Reactivity**

Human, Mouse

**Conjugation**

Unconjugated

**Tested**

IF, IHC-P, WB

**Applications**
**Immunogen**

This POLDIP3 antibody is generated from rabbits immunized with a KLH conjugated synthetic peptide between 93-120 amino acids from the N-terminal region of human POLDIP3.

**Target**

POLDIP3

**Preservatives**

Supplied in PBS with 0.09% (W/V) sodium azide.

**Form/Appearance**

Liquid

**Concentration**

batch dependent

**Storage**

Store at 4°C for three months and -20°C, stable for up to one year. As with all antibodies care should be taken to avoid repeated freeze thaw cycles. Antibodies should not be exposed to prolonged high temperatures.

**Note**

For research use only

**Application notes**

For IHC-P starting dilution is: 1:25  
For IF starting dilution is: 1:25  
For WB starting dilution is: 1:1000

**Isotype**

Rabbit Ig

**Clonality**

Polyclonal

**MW**

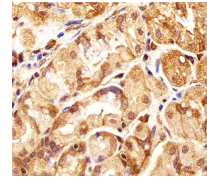
46 kDa

**Uniprot ID**
[Q9BY77](#)
**NCBI**
[Q9BY77](#)
**Dilution Range**

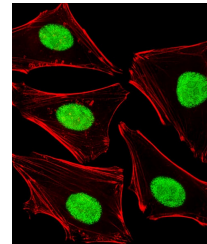
For IHC-P starting dilution is: 1:25  
For IF starting dilution is: 1:25  
For WB starting dilution is: 1:1000

**Expiration Date**

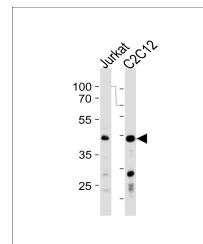
12 months from date of receipt.



Immunohistochemical analysis of paraffin...



Fluorescent image of HeLa cells stained ...



Western blot analysis in Jurkat, mouse C...