

Product Datasheet

Tbkbp1 Antibody (orb1265123)

Description

Tbkbp1 Antibody

Species/Host

Rabbit

Reactivity

Human, Mouse

Conjugation

Unconjugated

Tested

WB

Applications
Immunogen

This Mouse Tbkbp1 antibody is generated from rabbits immunized with a KLH conjugated synthetic peptide between 470-497 amino acids from the C-terminal region of mouse Tbkbp1.

Target

Tbkbp1

Preservatives

Supplied in PBS with 0.09% (W/V) sodium azide.

Form/Appearance

Liquid

Concentration

batch dependent

Storage

Store at 4°C for three months and -20°C, stable for up to one year. As with all antibodies care should be taken to avoid repeated freeze thaw cycles. Antibodies should not be exposed to prolonged high temperatures.

Note

For research use only

Application notes

For WB starting dilution is: 1:4000

Isotype

Rabbit Ig

Clonality

Polyclonal

MW

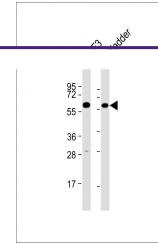
67 kDa

Uniprot ID
[A2A9T0](#)
NCBI
[A2A9T0](#)
Dilution Range

For WB starting dilution is: 1:4000

Expiration Date

12 months from date of receipt.



Western Blot
at 1:4000
dilution Lane
1: ...