
Product Datasheet

MYH14 Antibody (orb1265041)

Description

MYH14 Antibody

Species/Host

Rabbit

Reactivity

Human

Conjugation

Unconjugated

Tested Applications

IHC-P, WB

Immunogen

This MYH14 antibody is generated from a rabbit immunized with a KLH conjugated synthetic peptide between 654-668 amino acids from the Central region of human MYH14.

Target

MYH14

Preservatives

Supplied in PBS with 0.09% (W/V) sodium azide.

Form/Appearance

Liquid

Concentration

batch dependent

Storage

Store at 4°C for three months and -20°C, stable for up to one year. As with all antibodies care should be taken to avoid repeated freeze thaw cycles. Antibodies should not be exposed to prolonged high temperatures.

Note

For research use only

Application notes

For IHC-P starting dilution is: 1:25 For WB starting dilution is: 1:1000

Isotype

Rabbit Ig

Clonality

Polyclonal

MW

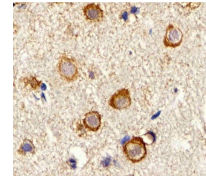
228 kDa

Uniprot ID
[Q7Z406](https://www.uniprot.org/entry/Q7Z406)
NCBI
[Q7Z406](https://www.ncbi.nlm.nih.gov/nuccore/Q7Z406)
Dilution Range

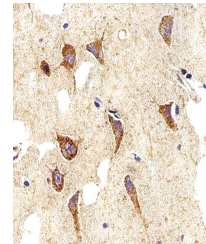
For IHC-P starting dilution is: 1:25 For WB starting dilution is: 1:1000

Expiration Date

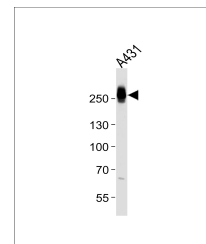
12 months from date of receipt.



Immunohistochemical analysis of paraffin...



Immunohistochemical analysis of paraffin...



Western blot analysis of lysate from A43...