

---

## Product Datasheet

### RBX1 Antibody (orb1265034)

**Description**

RBX1 Antibody

**Species/Host**

Rabbit

**Reactivity**

Human

**Conjugation**

Unconjugated

**Tested Applications**

IF, IHC-P, WB

**Immunogen**

This RBX1 antibody is generated from a rabbit immunized with a KLH conjugated synthetic peptide between 74-108 amino acids from the C-terminal region of human RBX1.

**Target**

RBX1

**Preservatives**

Supplied in PBS with 0.09% (W/V) sodium azide.

**Form/Appearance**

Liquid

**Concentration**

batch dependent

**Storage**

Store at 4°C for three months and -20°C, stable for up to one year. As with all antibodies care should be taken to avoid repeated freeze thaw cycles. Antibodies should not be exposed to prolonged high temperatures.

**Note**

For research use only

**Application notes**

For WB starting dilution is: 1:1000  
For IHC-P starting dilution is: 1:25  
For IF starting dilution is: 1:25

**Isotype**

Rabbit Ig

**Clonality**

Polyclonal

**MW**

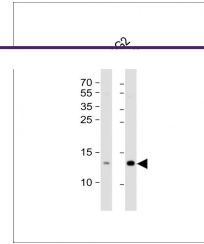
12 kDa

**Uniprot ID**
[P62877](#)
**NCBI**
[P62877](#)
**Dilution Range**

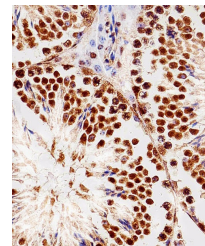
For WB starting dilution is: 1:1000  
For IHC-P starting dilution is: 1:25  
For IF starting dilution is: 1:25

**Expiration Date**

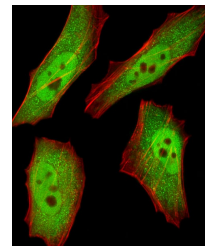
12 months from date of receipt.



Western Blot at  
1:1000 dilution Lane  
1: ...



Immunohistochemical  
analysis of paraffin...



Fluorescent image of  
HeLa cells stained ...