

---

## Product Datasheet

### PLAUR Antibody (orb1265029)

**Description**

PLAUR Antibody

**Species/Host**

Rabbit

**Reactivity**

Human

**Conjugation**

Unconjugated

**Tested**

IHC-P, WB

**Applications**
**Immunogen**

This PLAUR antibody is generated from a rabbit immunized with a KLH conjugated synthetic peptide between 273-305 amino acids from the C-terminal region of human PLAUR.

**Target**

PLAUR

**Preservatives**

Supplied in PBS with 0.09% (W/V) sodium azide.

**Form/Appearance**

Liquid

**Concentration**

batch dependent

**Storage**

Store at 4°C for three months and -20°C, stable for up to one year. As with all antibodies care should be taken to avoid repeated freeze thaw cycles. Antibodies should not be exposed to prolonged high temperatures.

**Note**

For research use only

**Application notes**

For IHC-P starting dilution is: 1:25

**Isotype**

Rabbit Ig

**Clonality**

Polyclonal

**MW**

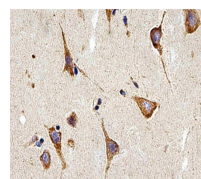
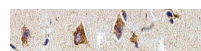
37 kDa

**Uniprot ID**
[Q03405](#)
**NCBI**
[Q03405](#)
**Dilution Range**

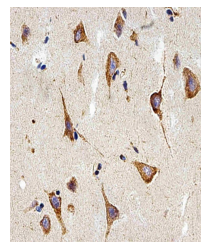
For IHC-P starting dilution is: 1:25

**Expiration Date**

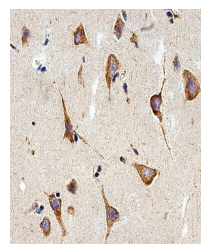
12 months from date of receipt.



Immunohistochemical analysis of paraffin...



Immunohistochemical analysis of paraffin...



Immunohistochemical analysis of paraffin...