
Product Datasheet

HIST1H2AG Antibody (orb1265025)

Description

HIST1H2AG Antibody

Species/Host

Rabbit

Reactivity

Human, Mouse

Conjugation

Unconjugated

Tested

FC, IHC-P, WB

Applications
Immunogen

This HIST1H2AG antibody is generated from a rabbit immunized with a KLH conjugated synthetic peptide between 63-87 amino acids from the Central region of human HIST1H2AG.

Target

HIST1H2AG

Preservatives

Supplied in PBS with 0.09% (W/V) sodium azide.

Form/Appearance

Liquid

Concentration

batch dependent

Storage

Store at 4°C for three months and -20°C, stable for up to one year. As with all antibodies care should be taken to avoid repeated freeze thaw cycles. Antibodies should not be exposed to prolonged high temperatures.

Note

For research use only

Application notes

For WB starting dilution is: 1:2000 For IHC-P starting dilution is: 1:25 For FACS starting dilution is: 1:25

Isotype

Rabbit Ig

Clonality

Polyclonal

MW

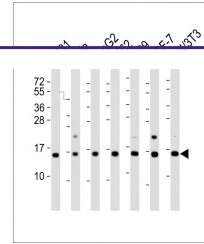
14 kDa

Uniprot ID
[P0C0S8](#)
NCBI
[P0C0S8](#)
Dilution Range

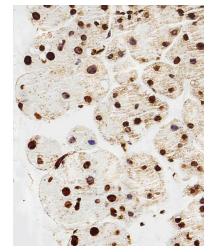
For WB starting dilution is: 1:2000 For IHC-P starting dilution is: 1:25 For FACS starting dilution is: 1:25

Expiration Date

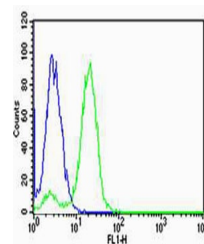
12 months from date of receipt.



Western Blot at 1:2000 dilution Lane 1: ...



Immunohistochemical analysis of paraffin...



Flow cytometric analysis of HeLa cells U...