

---

## Product Datasheet

### GADD45GIP1 Antibody (orb1265024)

**Description**

GADD45GIP1 Antibody

**Species/Host**

Rabbit

**Reactivity**

Human

**Conjugation**

Unconjugated

**Tested Applications**

FC, WB

**Immunogen**

This GADD45GIP1 antibody is generated from a rabbit immunized with a KLH conjugated synthetic peptide between 13-45 amino acids from the N-terminal region of human GADD45GIP1.

**Target**

GADD45GIP1

**Preservatives**

Supplied in PBS with 0.09% (W/V) sodium azide.

**Form/Appearance**

Liquid

**Concentration**

batch dependent

**Storage**

Store at 4°C for three months and -20°C, stable for up to one year. As with all antibodies care should be taken to avoid repeated freeze thaw cycles. Antibodies should not be exposed to prolonged high temperatures.

**Note**

For research use only

**Application notes**

For FACS starting dilution is: 1:25  
For WB starting dilution is: 1:1000

**Isotype**

Rabbit Ig

**Clonality**

Polyclonal

**MW**

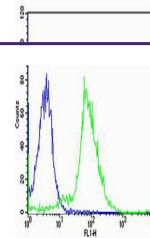
25 kDa

**Uniprot ID**
[Q8TAE8](#)
**NCBI**
[Q8TAE8](#)
**Dilution Range**

For FACS starting dilution is: 1:25  
For WB starting dilution is: 1:1000

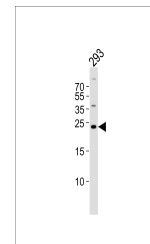
**Expiration Date**

12 months from date of receipt.



Flow cytometric analysis of MCF-7 cells

...



Western blot analysis of lysate from 293...