
Product Datasheet

ADRA1D Antibody (orb1265022)

Description

ADRA1D Antibody

Species/Host

Rabbit

Reactivity

Human, Rat

Conjugation

Unconjugated

Tested

FC, IHC-P, WB

Applications
Immunogen

This ADRA1D antibody is generated from a rabbit immunized with a KLH conjugated synthetic peptide between 1-30 amino acids from the N-terminal region of human ADRA1D.

Target

ADRA1D

Preservatives

Supplied in PBS with 0.09% (W/V) sodium azide.

Form/Appearance

Liquid

Concentration

batch dependent

Storage

Store at 4°C for three months and -20°C, stable for up to one year. As with all antibodies care should be taken to avoid repeated freeze thaw cycles. Antibodies should not be exposed to prolonged high temperatures.

Note

For research use only

Application notes

For IHC-P starting dilution is: 1:25
For FACS starting dilution is: 1:25
For WB starting dilution is: 1:1000

Isotype

Rabbit Ig

Clonality

Polyclonal

MW

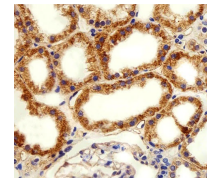
60 kDa

Uniprot ID
[P25100](#)
NCBI
[P25100](#)
Dilution Range

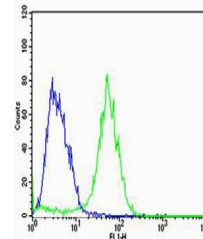
For IHC-P starting dilution is: 1:25
For FACS starting dilution is: 1:25
For WB starting dilution is: 1:1000

Expiration Date

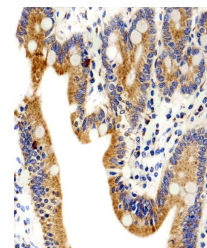
12 months from date of receipt.



Immunohistochemical analysis of paraffin...



Flow cytometric analysis of MCF-7 cells ...



Immunohistochemical analysis of paraffin...