
Product Datasheet

CHML Antibody (orb1265019)

Description

CHML Antibody

Species/Host

Rabbit

Reactivity

Human

Conjugation

Unconjugated

Tested Applications

FC, IHC-P, WB

Immunogen

This CHML antibody is generated from a rabbit immunized with a KLH conjugated synthetic peptide between 624-656 amino acids from the C-terminal region of human CHML.

Target

CHML

Preservatives

Supplied in PBS with 0.09% (W/V) sodium azide.

Form/Appearance

Liquid

Concentration

batch dependent

Storage

Store at 4°C for three months and -20°C, stable for up to one year. As with all antibodies care should be taken to avoid repeated freeze thaw cycles. Antibodies should not be exposed to prolonged high temperatures.

Note

For research use only

Application notes

For IHC-P starting dilution is: 1:25 For FACS starting dilution is: 1:25 For WB starting dilution is: 1:1000

Isotype

Rabbit Ig

Clonality

Polyclonal

MW

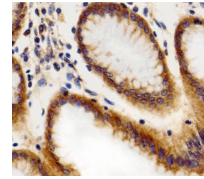
74 kDa

Uniprot ID
[P26374](#)
NCBI
[P26374](#)
Dilution Range

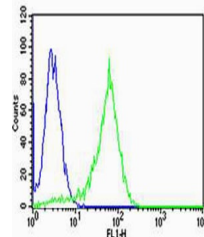
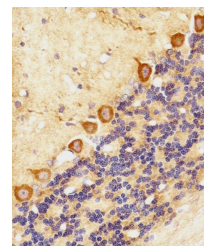
For IHC-P starting dilution is: 1:25 For FACS starting dilution is: 1:25 For WB starting dilution is: 1:1000

Expiration Date

12 months from date of receipt.



Immunohistochemical analysis of paraffin...


 Flow cytometric analysis of Hela cells
u...


Immunohistochemical analysis of paraffin...