
Product Datasheet

PSEN2 Antibody (orb1265012)

Description

PSEN2 Antibody

Species/Host

Rabbit

Reactivity

Human

Conjugation

Unconjugated

Tested

FC, WB

Applications
Immunogen

This PSEN2 antibody is generated from a rabbit immunized with a KLH conjugated synthetic peptide between 32-65 amino acids from the N-terminal region of human PSEN2(Presenilin-2 NTF subunit).

Target

PSEN2

Preservatives

Supplied in PBS with 0.09% (W/V) sodium azide.

Form/Appearance

Liquid

Concentration

batch dependent

Storage

Store at 4°C for three months and -20°C, stable for up to one year. As with all antibodies care should be taken to avoid repeated freeze thaw cycles. Antibodies should not be exposed to prolonged high temperatures.

Note

For research use only

Application notes

For FACS starting dilution is: 1:25 For WB starting dilution is: 1:1000

Isotype

Rabbit Ig

Clonality

Polyclonal

MW

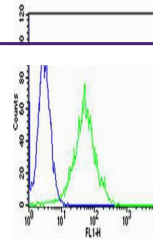
50 kDa

Uniprot ID
[P49810](#)
NCBI
[P49810](#)
Dilution Range

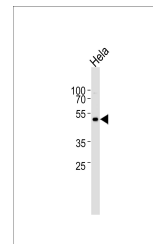
For FACS starting dilution is: 1:25 For WB starting dilution is: 1:1000

Expiration Date

12 months from date of receipt.



Flow cytometric analysis of HeLa cells u...



Western blot analysis of lysate from Hel...