

---

## Product Datasheet

### HBG2 Antibody (orb1265011)

**Description**

HBG2 Antibody

**Species/Host**

Rabbit

**Reactivity**

Human

**Conjugation**

Unconjugated

**Tested**

FC, IHC-P, WB

**Applications**
**Immunogen**

This HBG2 antibody is generated from a rabbit immunized with a KLH conjugated synthetic peptide between 101-133 amino acids from the C-terminal region of human HBG2.

**Target**

HBG2

**Preservatives**

Supplied in PBS with 0.09% (W/V) sodium azide.

**Form/Appearance**

Liquid

**Concentration**

batch dependent

**Storage**

Store at 4°C for three months and -20°C, stable for up to one year. As with all antibodies care should be taken to avoid repeated freeze thaw cycles. Antibodies should not be exposed to prolonged high temperatures.

**Note**

For research use only

**Application notes**

For IHC-P starting dilution is: 1:25 For FACS starting dilution is: 1:25 For WB starting dilution is: 1:1000

**Isotype**

Rabbit Ig

**Clonality**

Polyclonal

**MW**

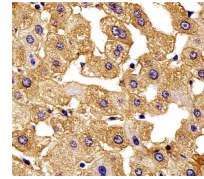
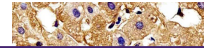
16 kDa

**Uniprot ID**
[P69892](#)
**NCBI**
[P69892](#)
**Dilution Range**

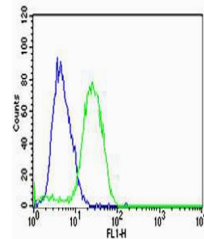
For IHC-P starting dilution is: 1:25 For FACS starting dilution is: 1:25 For WB starting dilution is: 1:1000

**Expiration Date**

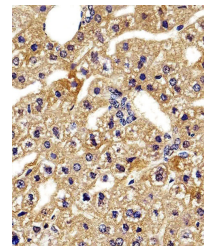
12 months from date of receipt.



Immunohistochemical analysis of paraffin...



Flow cytometric analysis of U-87 MG cell...



Immunohistochemical analysis of paraffin...