
Product Datasheet

NDUFC2 Antibody (orb1265010)

Description

NDUFC2 Antibody

Species/Host

Rabbit

Reactivity

Human, Mouse, Rat

Conjugation

Unconjugated

Tested Applications

FC, IF, IHC-P, WB

Immunogen

This NDUFC2 antibody is generated from a rabbit immunized with a KLH conjugated synthetic peptide between 5-39 amino acids from the N-terminal region of human NDUFC2.

Target

NDUFC2

Preservatives

Supplied in PBS with 0.09% (W/V) sodium azide.

Form/Appearance

Liquid

Concentration

batch dependent

Storage

Store at 4°C for three months and -20°C, stable for up to one year. As with all antibodies care should be taken to avoid repeated freeze thaw cycles. Antibodies should not be exposed to prolonged high temperatures.

Note

For research use only

Application notes

For IHC-P starting dilution is: 1:25
For IF starting dilution is: 1:25
For FACS starting dilution is: 1:25
For WB starting dilution is: 1:1000

Isotype

Rabbit Ig

Clonality

Polyclonal

MW

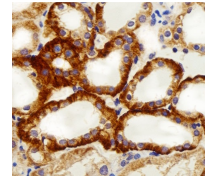
14 kDa

Uniprot ID
[O95298](#)
NCBI
[O95298](#)
Dilution Range

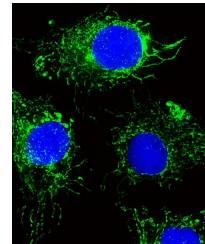
For IHC-P starting dilution is: 1:25
For IF starting dilution is: 1:25
For FACS starting dilution is: 1:25
For WB starting dilution is: 1:1000

Expiration Date

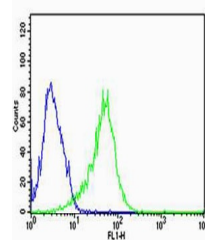
12 months from date of receipt.



Immunohistochemical analysis of paraffin...



Fluorescent image of HepG2 cells stained...



Flow cytometric analysis of HepG2 cells ...