

---

## Product Datasheet

### STRADA Antibody (orb1265008)

**Description**

STRADA Antibody

**Species/Host**

Rabbit

**Reactivity**

Human, Mouse

**Conjugation**

Unconjugated

**Tested Applications**

FC, IF, IHC-P, WB

**Immunogen**

This STRADA antibody is generated from a rabbit immunized with a KLH conjugated synthetic peptide between 303-346 amino acids from the C-terminal region of human STRADA.

**Target**

STRADA

**Preservatives**

Supplied in PBS with 0.09% (W/V) sodium azide.

**Form/Appearance**

Liquid

**Concentration**

batch dependent

**Storage**

Store at 4°C for three months and -20°C, stable for up to one year. As with all antibodies care should be taken to avoid repeated freeze thaw cycles. Antibodies should not be exposed to prolonged high temperatures.

**Note**

For research use only

**Application notes**

For IHC-P starting dilution is: 1:25  
For IF starting dilution is: 1:25  
For FACS starting dilution is: 1:25  
For WB starting dilution is: 1:1000

**Isotype**

Rabbit Ig

**Clonality**

Polyclonal

**MW**

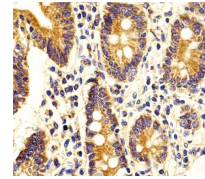
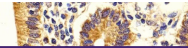
48 kDa

**Uniprot ID**
[Q7RTN6](#)
**NCBI**
[Q7RTN6](#)
**Dilution Range**

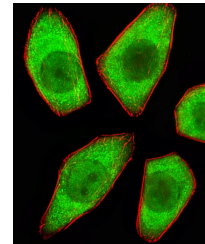
For IHC-P starting dilution is: 1:25  
For IF starting dilution is: 1:25  
For FACS starting dilution is: 1:25  
For WB starting dilution is: 1:1000

**Expiration Date**

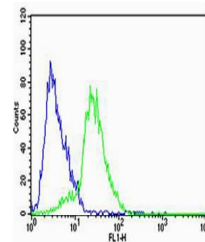
12 months from date of receipt.



Immunohistochemical analysis of paraffin...



Fluorescent image of A549 cells stained ...



Flow cytometric analysis of SH-SY5Y cell...