
Product Datasheet

GDF11 Antibody (orb1265001)

Description

GDF11 Antibody

Species/Host

Rabbit

Reactivity

Human, Mouse

Conjugation

Unconjugated

Tested

IHC-P, WB

Applications
Immunogen

This GDF11 antibody is generated from rabbits immunized with a KLH conjugated synthetic peptide between 32-61 amino acids from the N-terminal region of human GDF11.

Target

GDF11

Preservatives

Supplied in PBS with 0.09% (W/V) sodium azide.

Form/Appearance

Liquid

Concentration

batch dependent

Storage

Store at 4°C for three months and -20°C, stable for up to one year. As with all antibodies care should be taken to avoid repeated freeze thaw cycles. Antibodies should not be exposed to prolonged high temperatures.

Note

For research use only

Application notes

For WB starting dilution is: 1:2000 For IHC-P starting dilution is: 1:10~50

Isotype

Rabbit Ig

Clonality

Polyclonal

MW

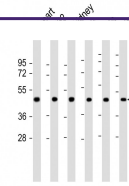
45 kDa

Uniprot ID
[O95390](#)
NCBI
[O95390](#)
Dilution Range

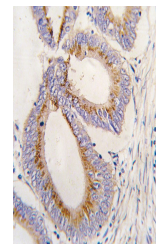
For WB starting dilution is: 1:2000 For IHC-P starting dilution is: 1:10~50

Expiration Date

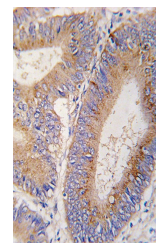
12 months from date of receipt.



Western Blot
at 1:2000
dilution Lane
1: ...



Formalin-
fixed and
paraffin-
embedded
hum...



Formalin-
fixed and
paraffin-
embedded
hum...