
Product Datasheet

RBCK1 Antibody (orb1264995)

Description

RBCK1 Antibody

Species/Host

Rabbit

Reactivity

Human, Mouse

Conjugation

Unconjugated

Tested

IHC-P, WB

Applications
Immunogen

This RBCK1 (UBCE7IP3) antibody is generated from rabbits immunized with a KLH conjugated synthetic peptide between 16-46 amino acids from the N-terminal region of human RBCK1 (UBCE7IP3).

Target

RBCK1

Preservatives

Supplied in PBS with 0.09% (W/V) sodium azide.

Form/Appearance

Liquid

Concentration

batch dependent

Storage

Store at 4°C for three months and -20°C, stable for up to one year. As with all antibodies care should be taken to avoid repeated freeze thaw cycles. Antibodies should not be exposed to prolonged high temperatures.

Note

For research use only

Application notes

For WB starting dilution is: 1:1000 For IHC-P starting dilution is: 1:50~100

Isotype

Rabbit Ig

Clonality

Polyclonal

MW

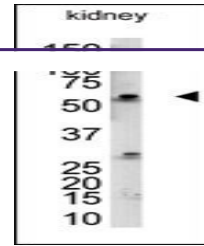
58 kDa

Uniprot ID
[Q9BYM8](#)
NCBI
[Q9BYM8](#)
Dilution Range

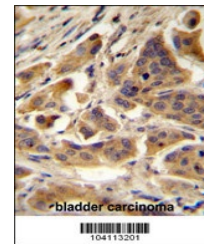
For WB starting dilution is: 1:1000 For IHC-P starting dilution is: 1:50~100

Expiration Date

12 months from date of receipt.



Antibody is used in Western blot to detect...



RBCK1 (UBCE7IP3) Antibody immunohistoche...