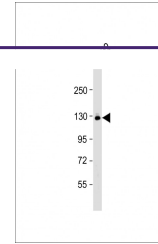
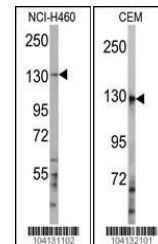

Product Datasheet

UBE4A Antibody (orb1264994)

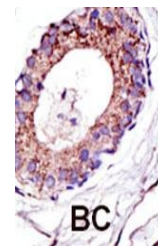
Description	UBE4A Antibody
Species/Host	Rabbit
Reactivity	Human
Conjugation	Unconjugated
Tested Applications	IHC-P, WB
Immunogen	This UBE4A antibody is generated from rabbits immunized with a KLH conjugated synthetic peptide between 1037-1067 amino acids from the C-terminal region of human UBE4A.
Target	UBE4A
Preservatives	Supplied in PBS with 0.09% (W/V) sodium azide.
Form/Appearance	Liquid
Concentration	batch dependent
Storage	Store at 4°C for three months and -20°C, stable for up to one year. As with all antibodies care should be taken to avoid repeated freeze thaw cycles. Antibodies should not be exposed to prolonged high temperatures.
Note	For research use only
Application notes	For WB starting dilution is: 1:1000 For IHC-P starting dilution is: 1:50~100
Isotype	Rabbit Ig
Clonality	Polyclonal
MW	123 kDa
Uniprot ID	Q14139
NCBI	Q14139
Dilution Range	For WB starting dilution is: 1:1000 For IHC-P starting dilution is: 1:50~100
Expiration Date	12 months from date of receipt.



Western Blot at 1:1000 dilution + K562 w...



Western blot analysis of anti-UBE4A Anti...



Formalin-fixed and paraffin-embedded hum...