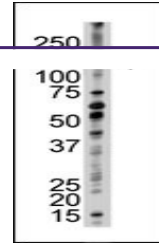
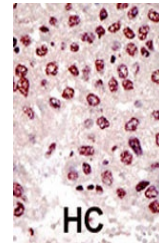

Product Datasheet

UBE4B Antibody (orb1264993)

Description	UBE4B Antibody
Species/Host	Rabbit
Reactivity	Human, Mouse
Conjugation	Unconjugated
Tested Applications	IHC-P, WB
Immunogen	This UBE4B antibody is generated from rabbits immunized with a KLH conjugated synthetic peptide between 112-142 amino acids from the N-terminal region of human UBE4B.
Target	UBE4B
Preservatives	Supplied in PBS with 0.09% (W/V) sodium azide.
Form/Appearance	Liquid
Concentration	batch dependent
Storage	Store at 4°C for three months and -20°C, stable for up to one year. As with all antibodies care should be taken to avoid repeated freeze thaw cycles. Antibodies should not be exposed to prolonged high temperatures.
Note	For research use only
Application notes	For WB starting dilution is: 1:1000For IHC-P starting dilution is: 1:50~100
Isotype	Rabbit Ig
Clonality	Polyclonal
MW	146 kDa
Uniprot ID	O95155
NCBI	O95155
Dilution Range	For WB starting dilution is: 1:1000For IHC-P starting dilution is: 1:50~100
Expiration Date	12 months from date of receipt.



Antibody is used in Western blot to dete...



Formalin-fixed and paraffin-embedded hum...