
Product Datasheet

UBE2B Antibody (orb1264989)

Description

UBE2B Antibody

Species/Host

Rabbit

Reactivity

Human

Conjugation

Unconjugated

Tested Applications

IHC-P, WB

Immunogen

This UBE2B antibody is generated from rabbits immunized with a KLH conjugated synthetic peptide between 117-146 amino acids from the C-terminal region of human UBE2B.

Target

UBE2B

Preservatives

Supplied in PBS with 0.09% (W/V) sodium azide.

Form/Appearance

Liquid

Concentration

batch dependent

Storage

Store at 4°C for three months and -20°C, stable for up to one year. As with all antibodies care should be taken to avoid repeated freeze thaw cycles. Antibodies should not be exposed to prolonged high temperatures.

Note

For research use only

Application notes

For IHC-P starting dilution is: 1:50~100 For WB starting dilution is: 1:1000

Isotype

Rabbit Ig

Clonality

Polyclonal

MW

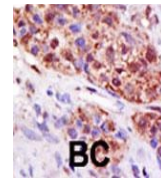
17 kDa

Uniprot ID
[P63146](#)
NCBI
[P63146](#)
Dilution Range

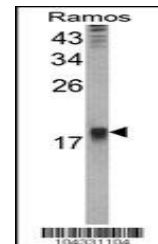
For IHC-P starting dilution is: 1:50~100 For WB starting dilution is: 1:1000

Expiration Date

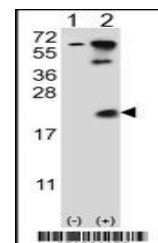
12 months from date of receipt.



Formalin-fixed and paraffin-embedded hum...



Western blot analysis of UBE2B Antibody ...



Western blot analysis of UBE2B using rab...