

Product Datasheet

SYVN1 Antibody (orb1264933)

Description

SYVN1 Antibody

Species/Host

Rabbit

Reactivity

Human, Mouse

Conjugation

Unconjugated

Tested Applications

IF, IHC-P, WB

Immunogen

This SYVN1 (HRD1) antibody is generated from rabbits immunized with a KLH conjugated synthetic peptide between 586-617 amino acids from the C-terminal region of human SYVN1 (HRD1).

Target

SYVN1

Preservatives

Supplied in PBS with 0.09% (W/V) sodium azide.

Form/Appearance

Liquid

Concentration

batch dependent

Storage

Store at 4°C for three months and -20°C, stable for up to one year. As with all antibodies care should be taken to avoid repeated freeze thaw cycles. Antibodies should not be exposed to prolonged high temperatures.

Note

For research use only

Application notes

For WB starting dilution is: 1:2000
For IF starting dilution is: 1:200
For IHC-P starting dilution is: 1:50~100
For IHC-P starting dilution is: 1:50~100

Isotype

Rabbit Ig

Clonality

Polyclonal

MW

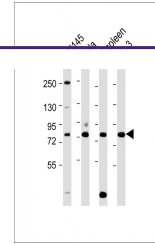
68 kDa

Uniprot ID
[Q86TM6](#)
NCBI
[Q86TM6](#)
Dilution Range

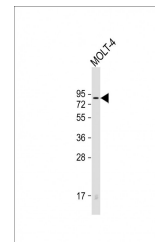
For WB starting dilution is: 1:2000
For IF starting dilution is: 1:200
For IHC-P starting dilution is: 1:50~100
For IHC-P starting dilution is: 1:50~100

Expiration Date

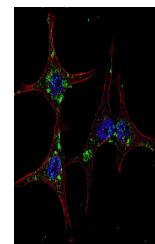
12 months from date of receipt.



Western Blot at 1:2000 dilution Lane 1: ...



Western Blot at 1:2000 dilution + MOLT-4...



Fluorescent confocal image of HeLa cells...